

City of Biddeford
Downtown Committee
April 25, 2023 5:30 PM Council Chambers & Zoom

Please click this URL to join:
<https://biddeford.zoom.us/j/97674179544?pwd=MFh6dWozWmpSZ3NIT2FraIN0aU00dz09>

Webinar ID: 976 7417 9544
Passcode: 779874

Or One tap mobile:
+13017158592,,97674179544# US (Washington DC)
+13052241968,,97674179544# US

Or join by phone:
Dial(for higher quality, dial a number based on your current location):
US: +1 301 715 8592 or +1 305 224 1968 or +1 309 205 3325

International numbers available: <https://biddeford.zoom.us/j/97674179544>

Status: In-Person and via Zoom; Council Chambers; 5:30 p.m.

- 1. Call to order**
- 2. Approval of the Minutes**
- 3. Staff Update**
- 4. Discussion/Review**
 - 4.a. 20230425 Discussion/Parking near Super Sub Shop
[Parking near Super Sub Shop- MEMO](#)
[Parking Map](#)
- 5. Adjourn**



Downtown Committee

Meeting Date: April 25, 2023

Meeting Time: 5:30 P.M.

Agenda Item No: [4.a. 20230425]

Item Description: Super Sub Shop request for dedicated parking stalls

Submitted by: JoAnne W. Fisk, Interim Chief of Police

Supporting Information/Documentation:

From: **Elizabeth Girard** <supersubshopllc@gmail.com>

Date: Mon, Mar 20, 2023 at 2:22 PM

Subject: Super Sub Shop Parking

To: <Scott.whiting@biddefordmaine.org>

Good afternoon Scott,

My husband and I are the new owners of the Super Shop Shop and we are wondering what we could do about getting assigned parking spots for our store. There are 3 signs for 2 hour parking across from our store but cars are always parked all day and even sometimes for multiple days without moving. It does not seem like these areas are being mandated by parking enforcement. Our concern is our customers have nowhere to park especially in the winter when the snow pile has to take up two of the spots and then the extended stay vehicles take up the rest of the area. **Is there any way for at least 4 of the first spaces starting all the way to the right could be assigned for Super Sub Shop Parking Only?** That way our customers have somewhere to park and we are not losing business over no parking situation.

We appreciate your time looking into this for us!

Liz Girard

Super Sub Shop

Key Terms:

N/A

Executive Summary:

There are currently eight (8) free two-hour parking stalls ranging in distance from 30 feet to 85 ft. from the entrance to the Super Sub Shop. There are five (5) free 30-minute slots ranging in distance from 92 ft. to 126 ft. from the entrance to Super Sub. There is also 1 handicapped stall. The five free and one-handicapped stalls are located alongside 42 Franklin Street.

Additionally, there are 24 two-hour parking stalls, which run adjacent to Franklin (see map).

Detailed Review:

The Super Sub Shop is located at 69 Jefferson Street, intersection of Franklin Street. The area in question is known as the “Green Lot”. There are a total of 32 two-hour free parking stalls and 5 thirty-minute stalls to support the closest food establishments which are: Super Sub, George’s Italians and the Palace Diner. Doc’s Tavern also shares the limited free parking stalls with these establishments.

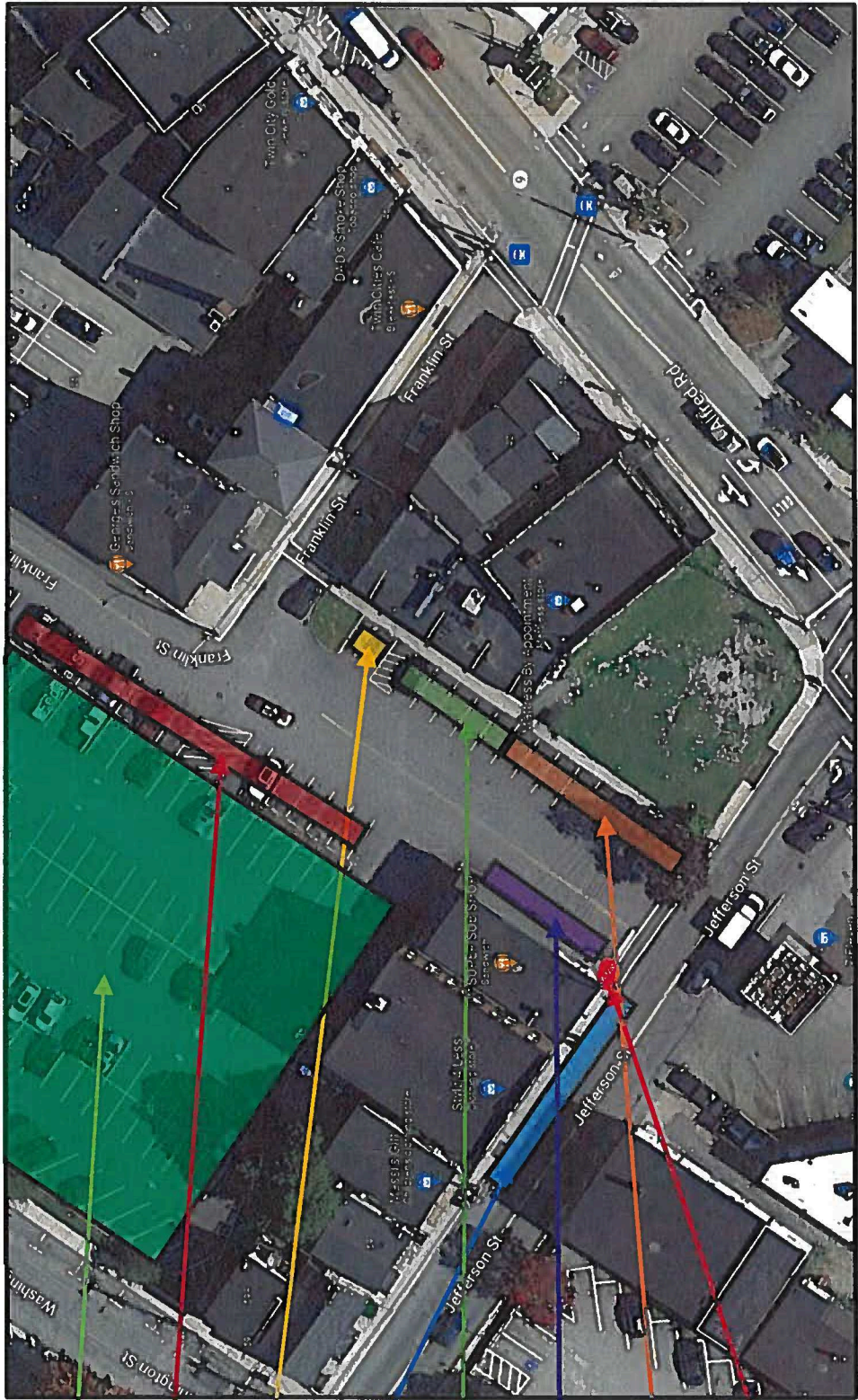
The remaining 124 parking stalls in the “Green Lot” are parking by permit only.

Funding Source:

N/A

Staff Recommendation:

Careful consideration should be given to requests in the downtown area for dedicated parking stalls for either public or private use. Parking in the downtown area is limited. Dedicating spaces to individual businesses would significantly reduce the number of public spaces for parking for all businesses.



Permit Only Parking
 2-Hour Parking Slots
 (1) Handicap Slot
 2-Hour Parking
 (5) Free 30-Minute Slots
 No Parking
 (8) 2-Hour Parking Slots
 Stop Sign